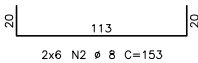
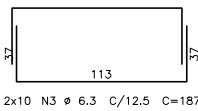
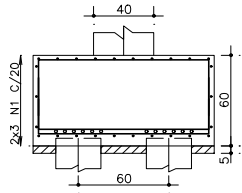
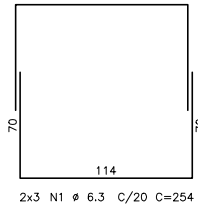
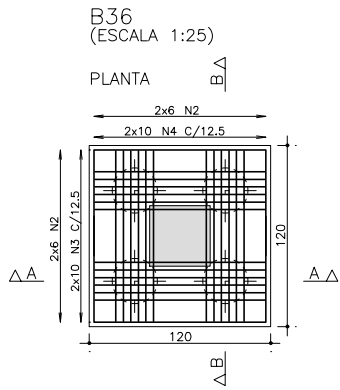
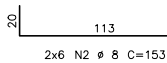
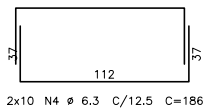
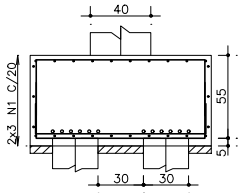


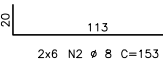
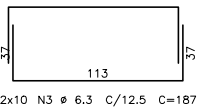
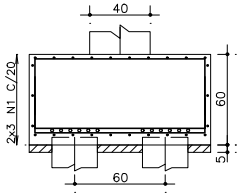
CORTE A - A



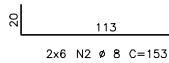
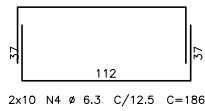
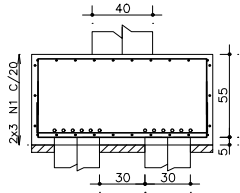
CORTE B - B



CORTE A - A

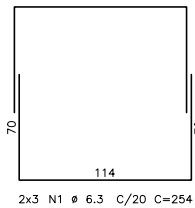
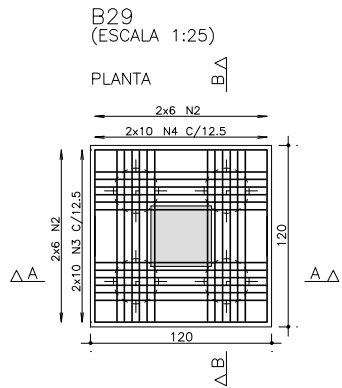


CORTE B - B

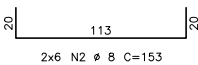
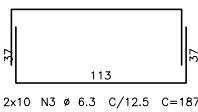
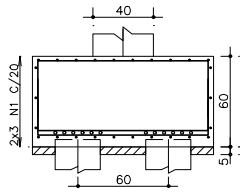


	AÇO	POS	BIT (mm)	QUANT	COMPRIMENTO	
					UNIT (cm)	TOTAL (cm)
B8	50A	1	6.3	6	254	1524
	50A	2	8	24	153	3672
	50A	3	6.3	20	187	3740
	50A	4	6.3	20	186	3720
B24	50A	1	6.3	6	254	1524
	50A	2	8	24	153	3672
	50A	3	6.3	20	187	3740
	50A	4	6.3	20	186	3720
B29	50A	1	6.3	6	254	1524
	50A	2	8	24	153	3672
	50A	3	6.3	20	187	3740
	50A	4	6.3	20	186	3720
B36	50A	1	6.3	6	254	1524
	50A	2	8	24	153	3672
	50A	3	6.3	20	187	3740
	50A	4	6.3	20	186	3720

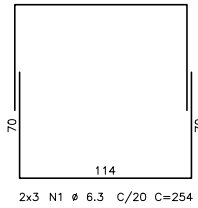
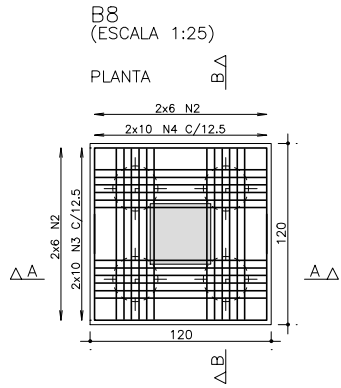
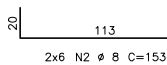
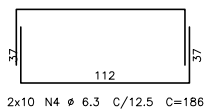
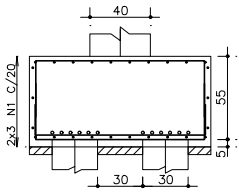
RESUMO AÇO CA 50-60			
AÇO	BIT (mm)	COMPR (m)	PESO (kg)
50A	6.3	359	88
50A	8	147	56
Peso Total 50A =			146 kg



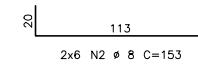
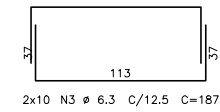
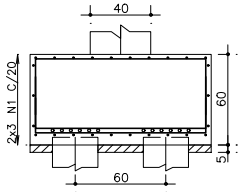
CORTE A - A



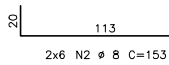
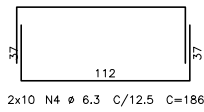
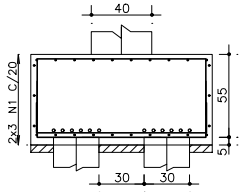
CORTE B - B




CORTE A - A



CORTE B - B



fck 250. kg/cm2 - C25

 Schuring & Schuring	Schuring & Schuring Ltda. Escritório Técnico B.E.SCHURING - Projetos de Engenharia Av. XV de Novembro, 489 - Porto 2o. Andar - Cuiabá MT Fone:(065) 321 9959 - Fax:(065) 623 5066 - Email - schuring@terra.com.br		
PROJETO:	PROPRIETÁRIO:	PREFEITURA MUNICIPAL VARZEA GRANDE	
		PROJETO ORLA DO PORTO ALAMEDA JULIO MULLER	
RESP. TEC. EXECUÇÃO:	OBRA:	CENTRO CULTURAL	
		END.: Alameda Julio Muller, s/n Bairro Alameda / Varzea Grande - MT	
AUTORES DO PROJETO:	ASSUNTO:	FUNDAÇÃO DET ARM BLOCOS	
		PECAS DETALHADAS B8 / B24 / B29 / B36	
Benedito Eliseu Schuring Eng.Civil- CREA 715/D-MT			
Andre Luiz Schuring Eng.Civil- CREA 8697/D-MT			
FCR: 250	DIREITOS AUTORAIS RESERVADOS VERIFICAR MEDIDAS NA OBRA	DATA: 13/08/2018	FOLHA No. 04
ESCALA: 1:50	ARQUIVO:		